

8Channel Mobile DVR



2016 SEP. V1.0

(Optional : WIFI / 3G / G-MOUSE)



* We reserve the right to modify the interest in the product specification, without notice, product display and operation screen content with a real machine-based.

Safety Precautions

Take and review some testing video initially to make sure the images were recorded correctly. Please note that manufacturer, its subsidiaries and affiliates, and its distributors are not liable for consequential damages arising from any malfunction of main device accessory, including memory device that results in the failure of an image to be recorded or to be recorded in a way that is machine readable.

Before using the product, please ensure that you read the safety precautions described below. Always ensure that the product is used correctly.

- Please keep device away from children.
- Use only recommended power sources.
- Do not attempt to disassemble, alter or apply heat to the product.
- Avoid dropping or subjecting the product to severe impacts.
- To avoid the risk of injury, do not touch the interior of the product if it has been dropped or otherwise damaged.
- Stop using the product immediately if it emits smoke, a strange smell, or otherwise behaves abnormally.
- Do not use organic solvents such as alcohol, benzene, or thinner to clean the product.
- Do not let the product come into contact with water (e.g. sea water) or other liquids.
- Do not allow liquids or foreign objects to enter the VVR.
- Do not place the VVR near or in direct flame.
- Do not handle the power cord with wet hands.
- Do not use the equipment in a manner that exceeds the rated capacity of the electrical outlet or wiring accessories. Do not use if the power cord or plug are damaged, or not fully plugged into the outlet.
- Do not allow direct or metal objects (such as pins or keys) to contact the terminals or plug.
- Avoid using, placing or storing the product in the humid or dusty areas.

Before applying 3G products, please ensure that you read the safety notifications described below.

- Company and user shall not modify certified low power radio frequency device the frequency, increase the power and change the characteristics and functions without permit.
- Use low power radio frequency device shall not affect flight safety and interfere with legal communications; when there is interference happened should be immediately suspended, and improve without interfering may continue to use.
- Legal communication means operation of radio communication in accordance with the provisions of the Telecommunications Act Low-power radio frequency device must endure the interference of legal communications, industrial, scientific and medical radiation wave equipment.

Index

A.	Features.....	1
B.	Specification	2
C.	Accessories	3
D.	Product Exterior	4
E.	Power ON / Power Off.....	7
F.	IR Remote Controller.....	8
G.	System Interface and Operation.....	9
H.	CARBOX Player on PC	13
I.	Format/Restore SD Card	21
J.	3G Internet Setting	26
K.	3G Client Remote Monitoring.....	31
L.	Capacity Evaluation of Continuous Recording Storage Device	47

A. Features

1. Support 8CH recording cameras at the same time to record driving images completely.
2. Wide range of power input, suitable for any kinds of vehicles.
3. Auto recording after power supplied.
4. Provide Video output for playing-back mode and operating in mainframe.
5. 4x I/O alarm input, 1x Alarm output, 1 audio input and 1x Audio output.
6. Built-in G-sensor , automatically detect crush, trig force recording.
7. Built-in WIFI and 3G network, different selection of connecting.
8. H.264 real time compression chip, Higher compression ratio and keep clear resolution.
9. Recording format: 720P 、 D1 、 CIF, used for different demands.
10. Complete Video Record List. Overall quick search event log.
11. Completely record driving video and sound to make sure attribution of responsibility when accident occurred.
12. Provide AVI convert function to users playback on PC.
13. Power management function, Extended record after power off.
14. Built-in super capacitor for completing data recording under severe impact.
15. G-Mouse optional, completely record your driving position and speed.
16. 3G module optional, control driving situation of vehicles anytime.

B. Specification

ITEM	DESCRIPTION
TV System	NTSC/PAL
OS	Embedded Linux
Video Input	8
Camera Power Output	8x 12V / 750mA
Video Output	1
Audio Input	1
Audio Output	1
ALARM IN/OUT	6/2
User Interface	GUI ICON CONTROL
Languages	English Trad/Simplified Chinese
Resolution	1280 x 720 / 720 x 480
Storage	Dual SD Cards (8GB~128GB)
LED Indicator	3 LED (LAN · GPS · REC/Power)
G-SENSOR	Yes
3G	Yes Optional 3G Module Required
Wi-Fi	Yes Optional Wi-Fi P23 USB Module Required
IR Remote Control	Yes
System Monitoring	Automatic reboot after unexpected power shutdown
Internet	Yes
Power	(1) DC 8V~32V (2)ACC ACC Off set via Player (3)DC12V Out
Super Capacitor	Built 5F
Dimension	250mm x 174.8mm x 69.5mm
Operate temperature	-20°C~65°C
Weight	1.85kg(Including bracket & SD Card Drive)

1. 720P cameras and D1 cameras can not be installed simultaneously.
2. No further notice for any modifications afterwards.
- 3.SD Card is not included; suggest to apply Class 8 or above.

C. Accessories

This product contains accessories as below:

- **Standard:**

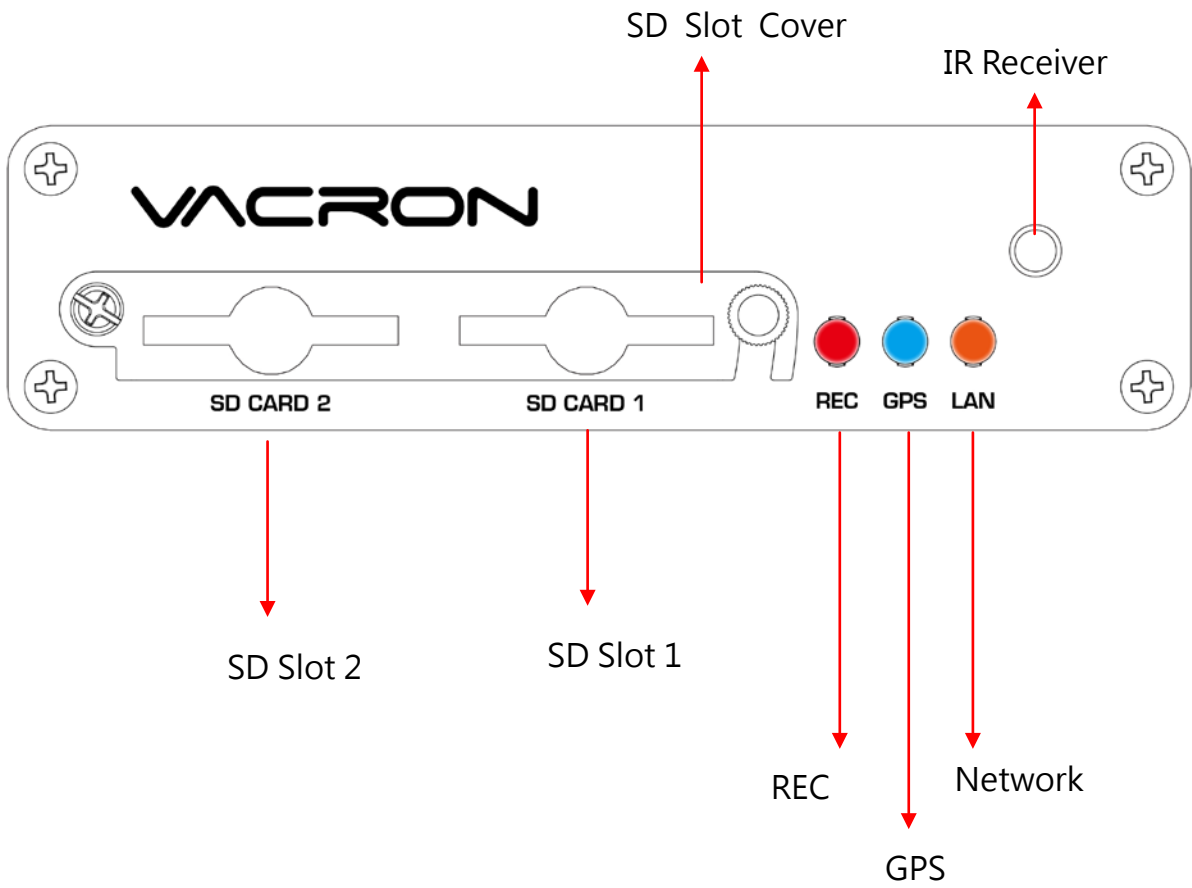
- Main Device
- Power Cable
- ALARM Cable
- IR Extension Cord
- IR Remote Control
- Software Disc
- User Manual

- **Optional**

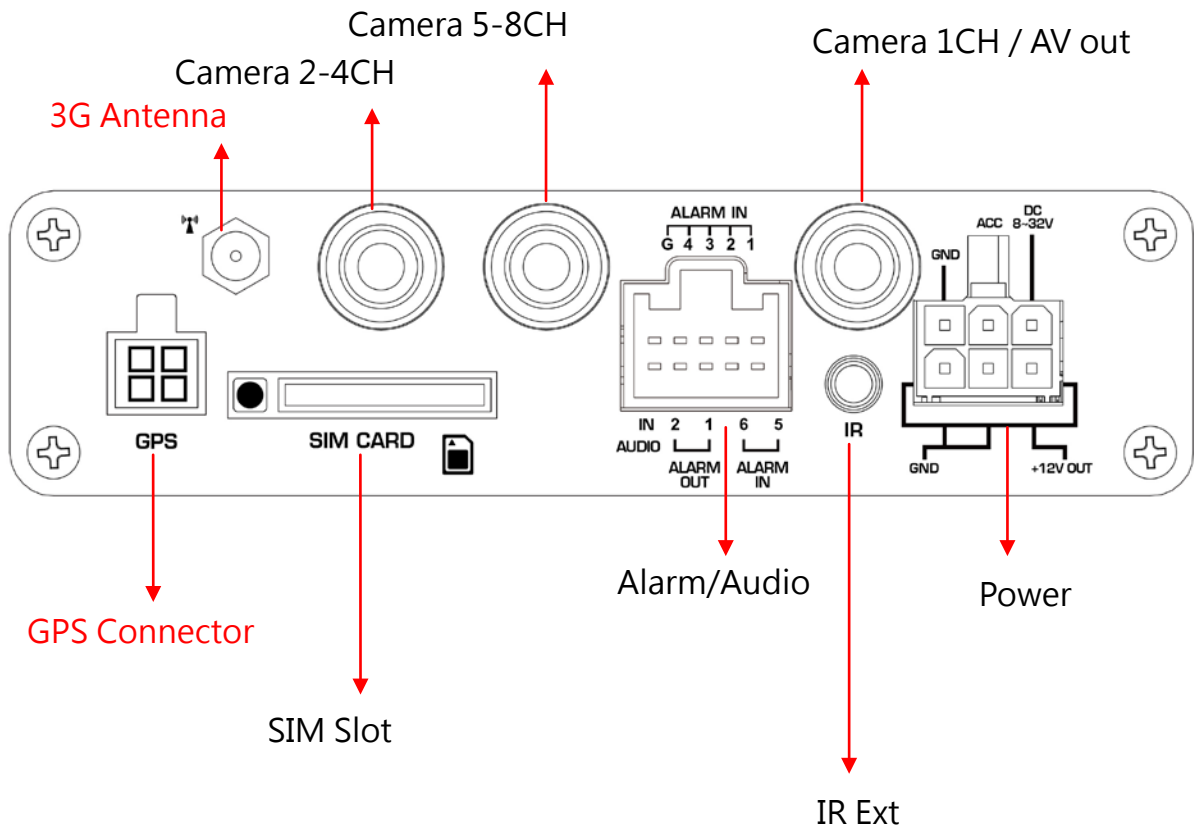
- 3G Module /Antenna
- G-Mouse
- SD Card
- Camera
- Microphone pad
- Camera extension cable

D. Product Exterior

Front Panel

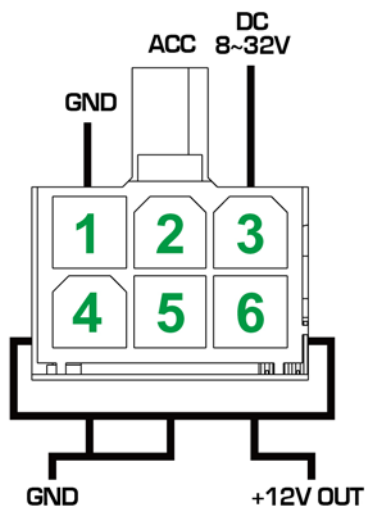


Rear Panel



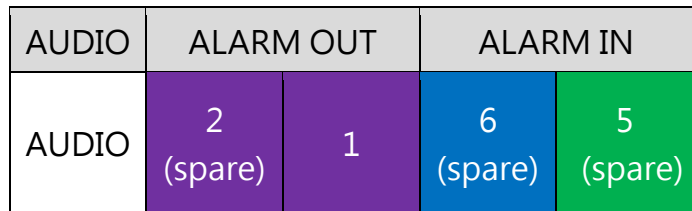
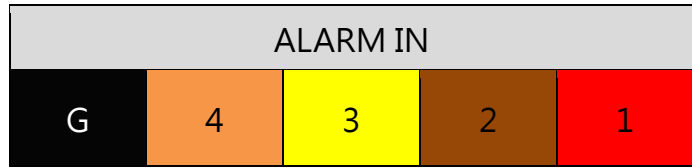
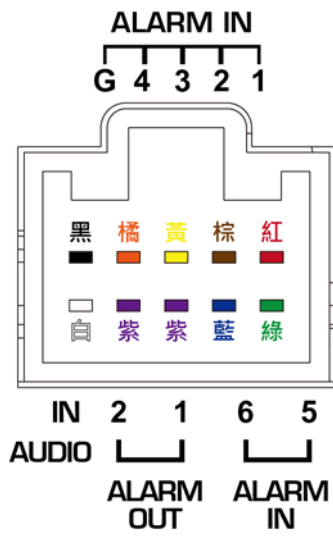
※ GPS / 3G / WiFi are optional

● Power Connector

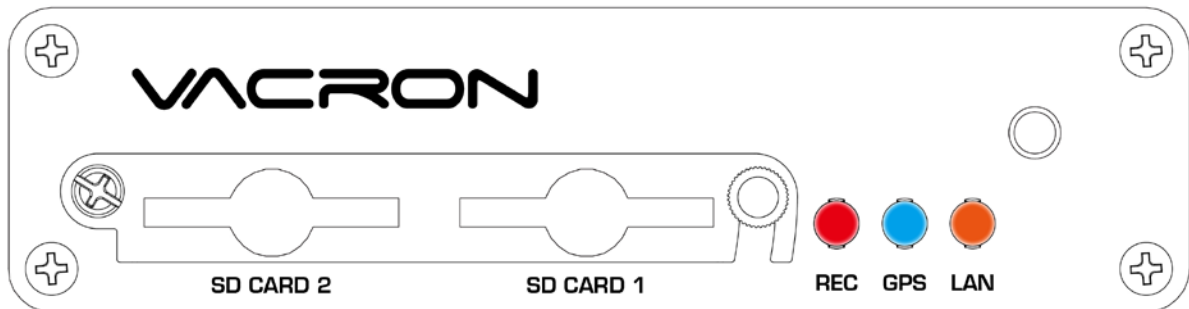


- A. GNDP (-)
- B. ACC
- C. DC8~32V IN (+)
- D. Signal and DC grounding
- E. Signal and DC grounding
- F. DC+12V Out

- Alarm/Audio Connector



E. Power ON / Power Off



(1) Power On

Insert SD Card into SD slot and closet SD slot lock, then turn on the power and it will take approximately 30 seconds. When lights start flashing as the recording is in progress.

(2) Power Off

Turn off the power; please wait for 5 seconds until super capacitor without electric. Then take the SD Card out out and playback the recording files in computer.

(3) Light Indicator

- Recording/Power Light(Red Light) :
 - Light Off- non-recording.
 - Light Flashing- recording.
 - Rapidly Flashing-Event/Trigger recording
- GPS Light(Blue Light) :
 - Light Off-GPS is not ready.
 - Light On- GPS is locating position.
- Network Light (Orange Light) :
 - Light Off-network disconnected.
 - Light On-network connected.

Two SD Card Mechanism

While both of the SD Cards are blank, the videos will be recorded in SD1;
When both of the SD Cards have videos; new videos will be recorded in the SD Card with latest videos

(Remark: While using playback function in DVR, it cannot take live recording at the same time.)


F. IR Remote Controller

Vehicle DVR can be operated through two methods: IR remote controller and PC software application.

- ◆ Through IR Remote controller instruction



Buttons Instruction			
No.	Function Description	No.	Function Description
1	1CH Screen Display	7	Confirm Button
2	Force Recording Button	8	Backward(Not Working)
3	4/8CH Screen Display	9	Forward
4	Mute	10	Playback \ Play
5	Menu	11	Pause
6	Arrow	12	Stop \ Left

	<p>Remote control inspection</p> <ul style="list-style-type: none"> ● Check the battery' s positive and negative polarity. ● Check the battery if run out. ● Check the sensor of remote control if be obscured. ● Check if there are fluorescent lamps are used nearby.
---	---

G. System Interface and Operation

◆ Live Monitoring Mode Display



Live Monitoring Mode
-4 Split Display (1~4Ch)

(1) Display Description:

- Press Ch1~Ch4 button or select on menu for single display.
- Press quad split screen button for 4Ch display, double click for 5-8ch display.
- Press menu button to enter menu option.
- Press play button to enter playback mode.

(2) Icon Description:

- : Recording
- : GPS Connecting
- : Voice Recording On
- : Event Recording On
- : 3G Connection On
- : Alarm Triggered

◆ OSD Menu Operation and Parameters Setup Description

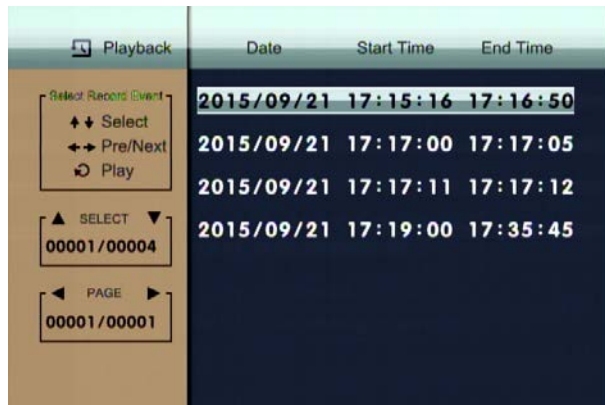
Recording Setting	Recording Frame	NTSC	720P	5-15 fps
			VGA	5-25 fps
	PAL	720P	5-15 fps	
		VGA	5-25 fps	
Resolution	Normal	Better	High	
Video Setting	Select 1~4CH to adjust Bright, Contrast and Color			
Time Setting	The time setting will be automatically calibrated by GPS signal. If no GPS signal, time and date can be set manually.			
GPS Setting	Select show speed and speed unit setting on live view display or Not.			
Plate Number Setting	Input range : A~Z and 0~9			
Working Mode	<ol style="list-style-type: none"> 1. Setup channel mode when system starts. 2. Select extensional time after ACC Off 3. Sound recording ON/OFF 			
Alarm Setting	Setup the mode after alarm triggered.			
System Protection	<ol style="list-style-type: none"> 1. Low voltage protection(triggered at ACC mode) 2. Notice of SD CARD protecting. 			
3G Network	3G function ON/OFF · show setting information at present(Optional)			
G-Sensor Setting	Once the function is activated, when the car collision happened, 『 Force Recording 』 mode will be automatically triggered, to prevent complete recording event not be overwritten.			
Data Backup	Select necessary files to backup.			
Restore Default	After restore default setting, machine will be restarted and cleaned original setting.			
Format SD CARD	Recording data will also be formatted at same time			
Firmware Update	Save the firmware update program into USB device and use USB device to update firmware. When update firmware please keep power supply. It will restart automatically after finishing update.			

◆ Playback Mode

Live screen on the device or on PC

- On the Device

- (1) Click play button on the remote control during live monitoring mode, to enter playback page.
- (2) To select search type then click enter button, to enter playback list



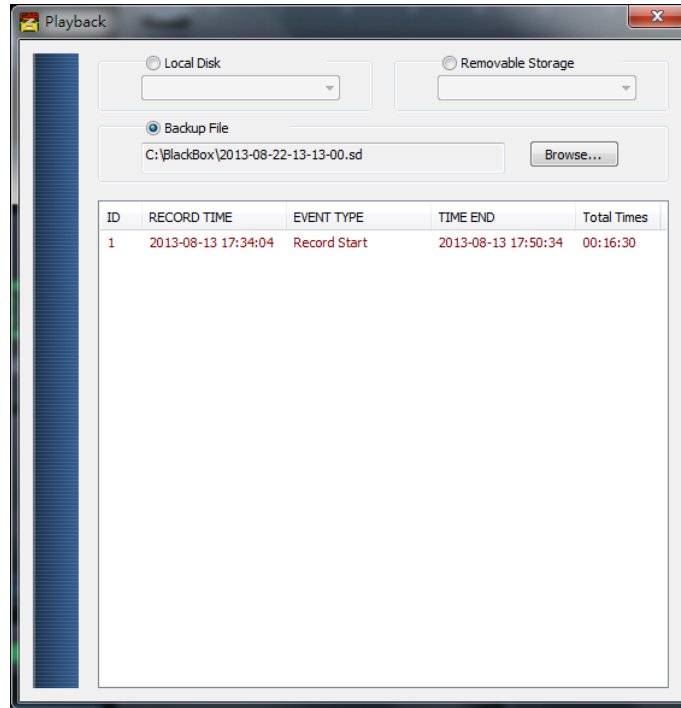
- (3) To select the playback file, then click enter button to enter the playback video file.

- Playback on PC: To enter playback by unplug and read SD CARD

- (1) To read the SD CARD with saving data on PC, then run the player software CarBox2.exe.

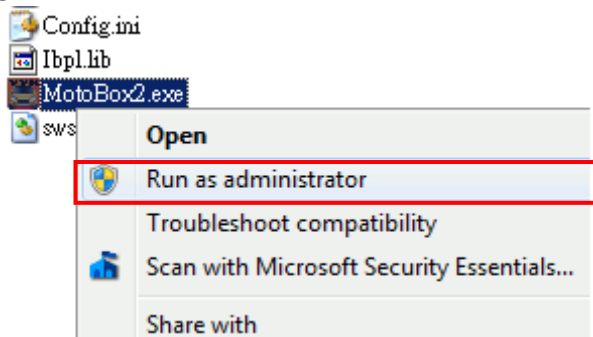
- (2) Click "Playback"  to open playlist menu.

- (3) Select SD CARD, the video files will be shown in the playlist, Click the video file to play.



Playback List Display

- ◆ (Remark:If the playback list cannot be read in Win7 system. Solution: click right button and execute CARBOX as Administer identity.)

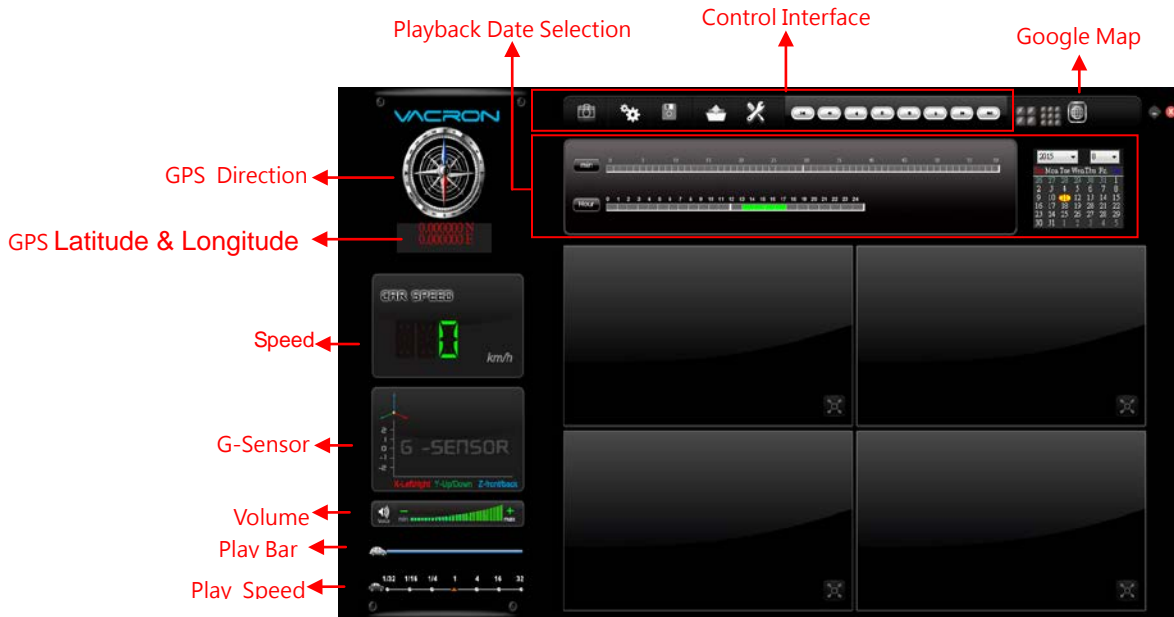


H. CARBOX Player on PC

Execute player software CarBox2.exe .





★**Caution:** It needs to install DirectX 9.0 or above before running CarBox2 software.


- Operating Instruction




(1). Control Panel Description

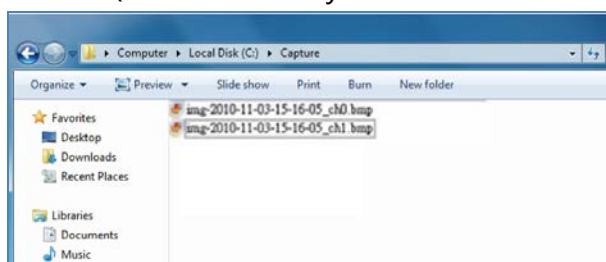


	Snapshot: Capture the footage screen.
	Configuration
	Disk Backup: Select backup location to save files.
	Playback: Select files in SD Card or PC to playback.

	Tool, SD Card format, language setting.
	Previous File: Play previous video.
	Previous Frame: Backwind previous frame in Pause situation.
	Save as SD files, Video backwind play.
	Pause: Pause playing video
	Stop: Stop playing video
	Play: Play pause video
	Next Frame: Forward next frame in pause situation.
	Next file: Play next video

◆ Snapshot

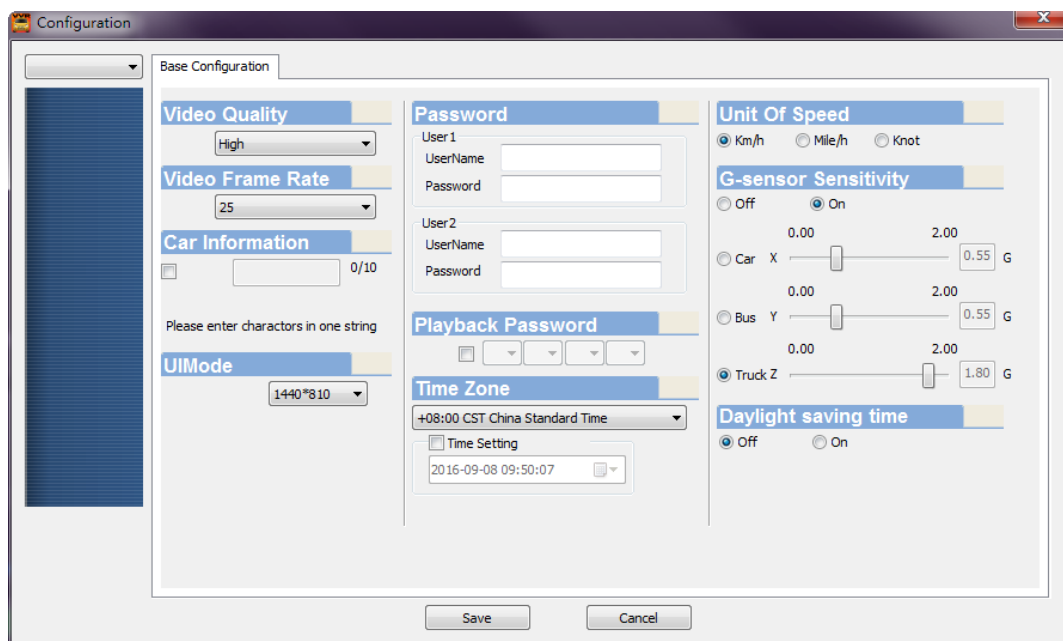
Screen shoot: Click the  icon, to capture the footage screen. The Image will be save as .bmp file format. Player will show the backup folder automatically. The default directory is the Snapshot folder. (Under the Player installation folder).



◆ Configuration

: Setup the SD Card Setting.

Before execute this function, please insert the SD Card into your computer. When finish all setting and click 『Save』, all the setting will save to the SD CARD device. When you insert the SD CARD device into your DVR, the DVR will read the setting and follow the setting to start recording.



Resolution	720P and VGA
Video Quality	Choose the resolution: High / Normal / Low
Video Frame Rate	Set the fps from 5 to 30
Car information	Car License, Driver (For Company car, Taxi, or fleet)
UI Mode	Setup Player Size.
Password	Encrypt the SD CARD device to prevent others who not permitted to access the SD CARD device. String length: 15 character. After setting the password, all actions, like Playback footage, setting, format SD CARD device, need the password. ★ Note : Upper character and lower is different.
Playback Password	The Machine playback password: should be confirming password when enter this setting /playback page.
Time Zone	GMT setting, to adjust the time zone.
Unit of Speed	Set the speed unit Km/hr Mile/hr Knot
G-sensor Sensitivity	G-sensor sensitivity setting mode Sensitivity setting : (Min/Low/Normal/High/Max)

Parking Mode	Setup Extend Recording Time after Engine off
Parking Frame Rate	Setup Extend Recording Frame after Engine off

◆ Backup

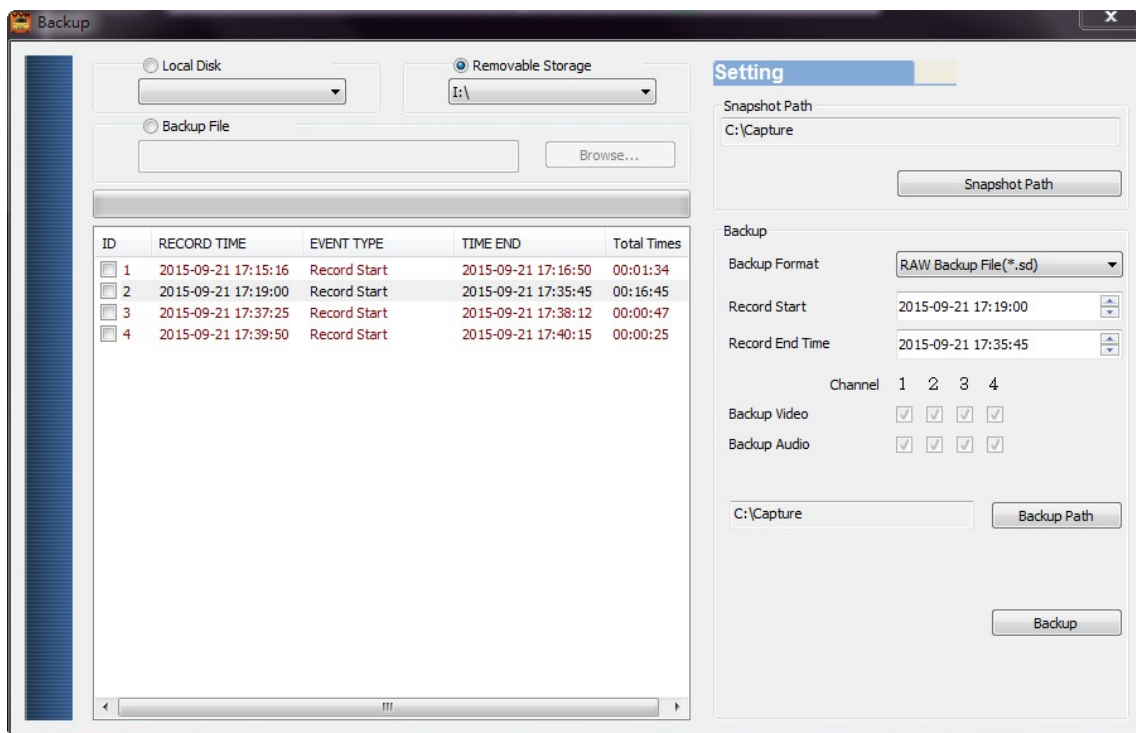


Backup folder: Choose the folder that backup file will save.

Backup the footage on the SD CARD device to your computer for data backup.



Select icon to start the backup function as the following :



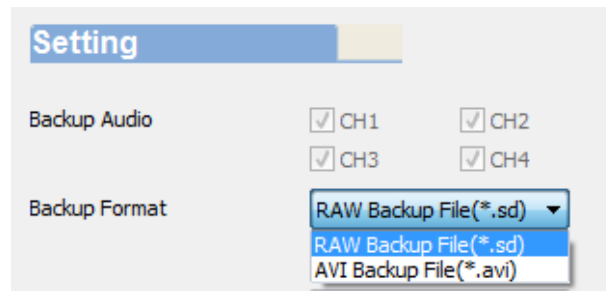
Step1. Choose the Local Disk, Removable Storage or Backup File.



Step2. Choose the file you want to backup on the SD CARD

ID	RECORD TIME	EVENT TYPE	TIME END	Total Times
<input type="checkbox"/> 1	2015-09-21 17:15:16	Record Start	2015-09-21 17:16:50	00:01:34
<input type="checkbox"/> 2	2015-09-21 17:19:00	Record Start	2015-09-21 17:35:45	00:16:45
<input type="checkbox"/> 3	2015-09-21 17:37:25	Record Start	2015-09-21 17:38:12	00:00:47
<input type="checkbox"/> 4	2015-09-21 17:39:50	Record Start	2015-09-21 17:40:15	00:00:25

Step3.Choose backup file format.




Backup Format :

● SD Format

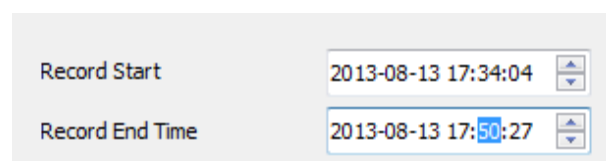
 2013-06-06-09-49-33.sd SD File 104 MB	Save as .sd file.
---	-------------------

● AVI Format

 2013-06-06-09-50-56-CHN01 00:00:30 55.2 MB	Save as .avi file.
--	--------------------

Note : *.sd format file contain image/ speed/ location and G-SENSOR data. *.avi format only can backup the video and audio. We recommend you backup as *.sd format.

Step4.You also can choose a period to backup the footage during the period



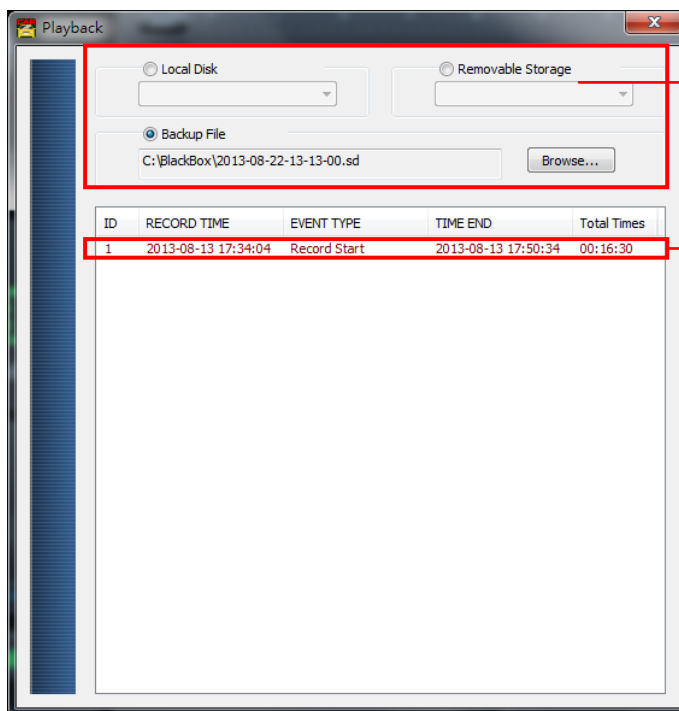
Step5.Choose the backup folder.

Step6.Start to backup.

◆ Playback



Playback the footage: Choose the file in SD CARD device or in the computer to playback.



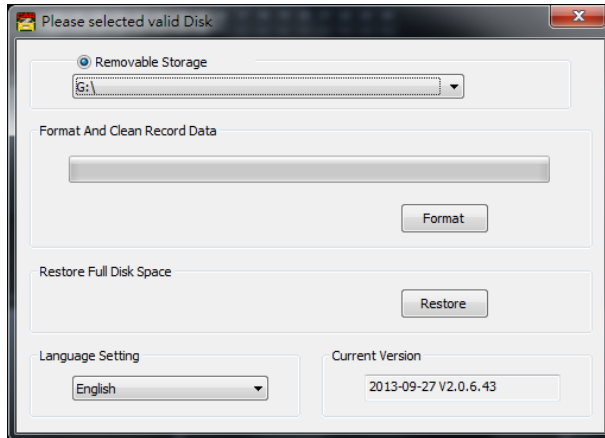
1. Choose the Local Disk, Removable Storage or Backup File

2. Choose the file

◆ Format



Format: Format the storage and Restore the storage format to windows format. Language setting, Firmware version. For Format and restore storage, please reference the next item.



(2). GPS Latitude & Longitude Coordinates



GPS Latitude & Longitude Coordinates : Display driving location and latitude & longitude with G-mouse (Optional)

(3). G-SENSOR



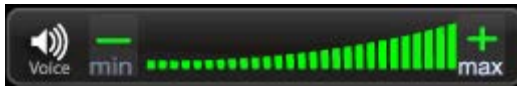
G-SENSOR :

X: The G-force from left & right of the car.

Y: The G-force from front & back of the car.

Z: The G-force from upside & downside of the car

(4). Volume Control



Volume BAR: Click the left button of mouse control to adjust the volume degree.

(5). Video Search



Video Searching : You can use the mouse to drag the bar to search the video quickly.

(6). Play Speed:



Play Speed: Support 2x, 4x 8x fast forwarding and -1/2x, -1/4x -1/8x slow play mode.

(7). Playback Date Selection

Quick switching by minutes

Date Search

Selecting by Hours/Minutes (24-hours)

I. Format/Restore SD Card

● Format SD Card

Q: When should you format the SD card?

A: For brand new SD card or an used SD card which is used in other equipment before, it should be formatted before using. °

※ Before format please backup the important data in your SD card.

Format SD Card by Device or PC.

(1) Format by Device

Step 1: Use remote controller to enter DVR menu and choose Format Disk.




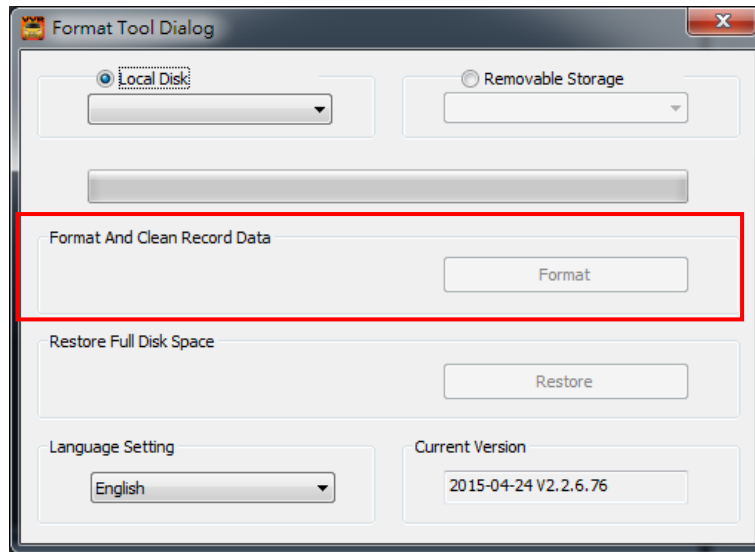
Step 2: Select "Yes" and Click "Enter" to start formatting.

Step 3: When the screen back to LIVE mode, the formatting is completed.

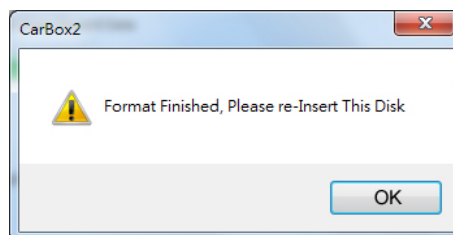
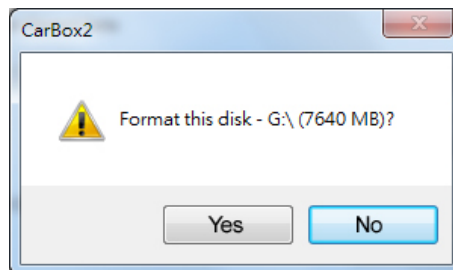
(2) Format On PC

Step 1: Connect the storage device / SD card to PC. Execute the CarBox2.exe software

- Step 2: Click  icon to enter format tool menu.
- Step 3: Click "Format" button.



- Step 4: Click "Yes"



(After format, re-plug the storage device, then you can set up related parameters and save. After setting, Install the SD CARD into the DVR and it can start to work.)

- **Restore SD Card**


Q. When you need to restore the Storage?

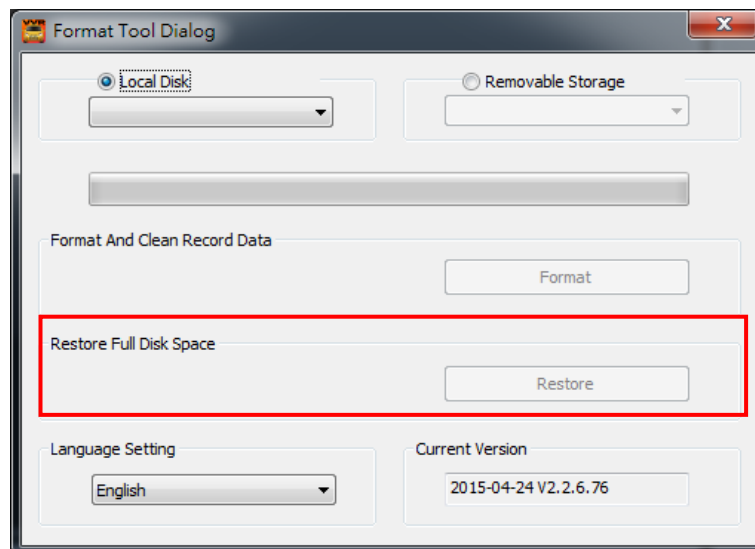
A. If the storage device(SD CARD) will be used in other purpose., please back-up record footages to PC firstly and then restore it.

※Before Restore please backup the important data in your SD CARD.

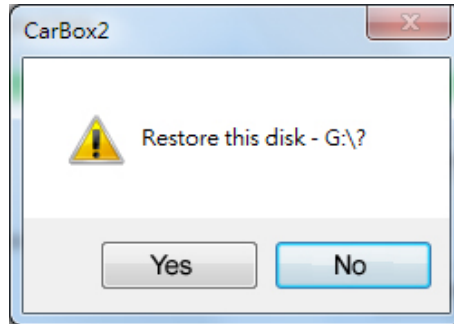
(1) Restore the Storage on PC Player

Step 1: Connect the storage device (SD Card) to PC. Execute CarBox.exe

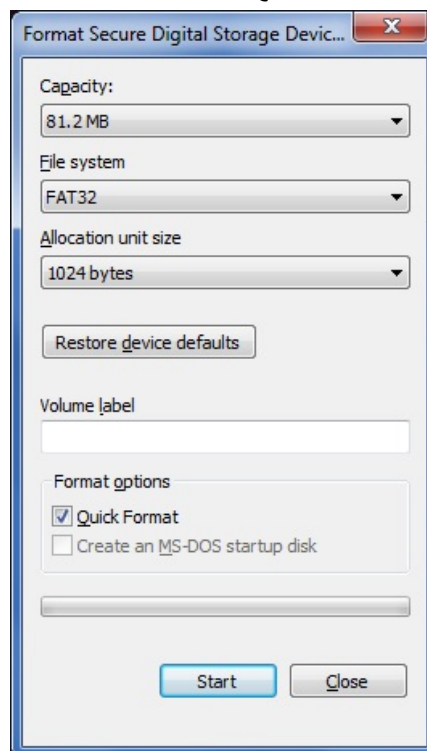
Step 2: Click  icon, choose the Storage, then press 『Restore』



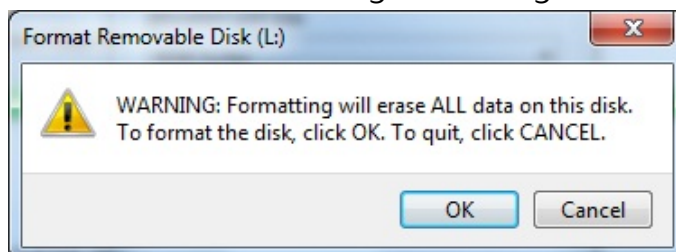
Step 3: The following window will pop up, Click 『Yes』 to start restore the Storage.



Step4. Now system will pop up the window to proceed the format procedure, please choose 『Quick format』 , then click 『Start』 .



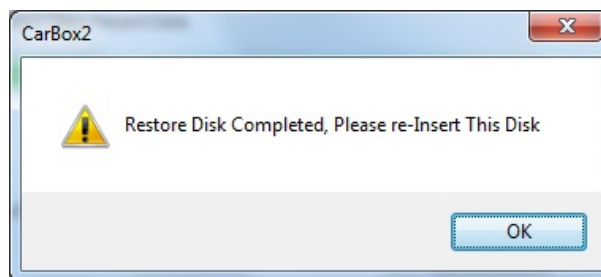
Step5. Click 『Yes』 to start formatting the Storage



Step6. Click "OK" to finish restore SD CARD device.



Step7.After finished, press 『OK』 . Then the Storage format is normal windows format.



J. 3G Internet Setting

(1) SIM Card Setting

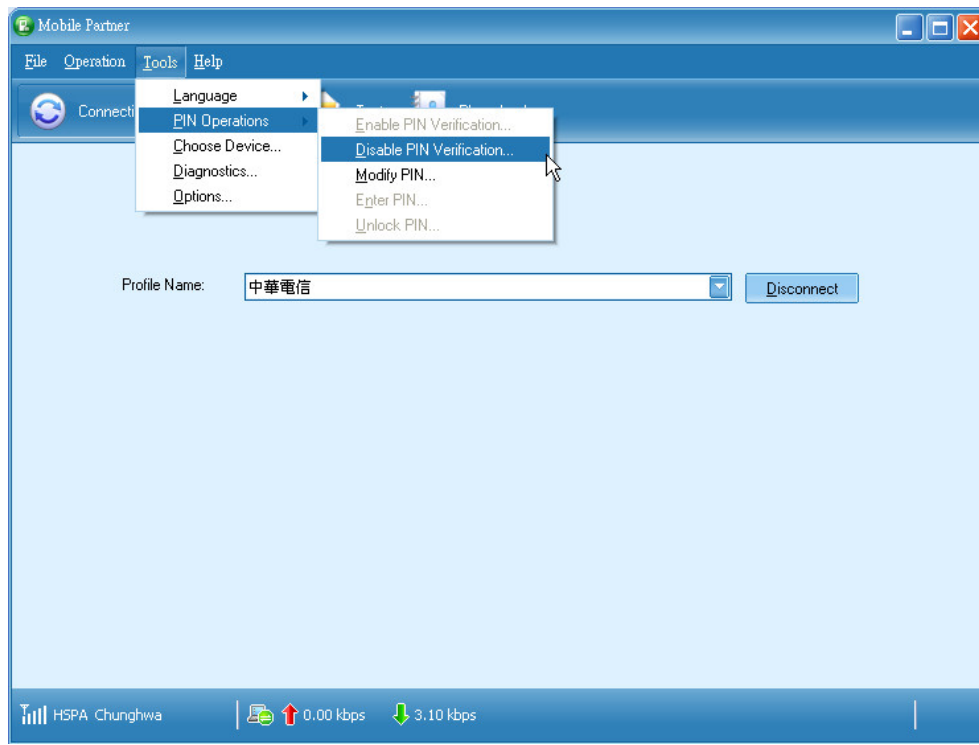
During using SIM card, the protected pin code must be turned off, please refer to the following steps.

(For example like HUWEI CHT-E180 model, 3.5G USB wireless adaptor)

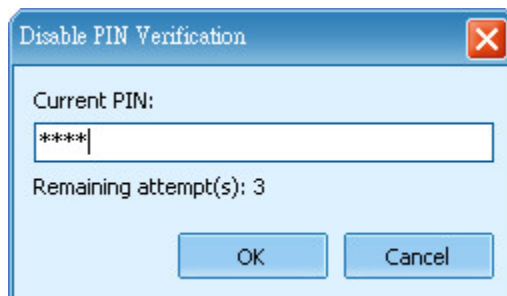
Step1. Plug in SIM card into 3G dongle then connect 3G dongle to PC, the system will automatically execute Mobile Partner



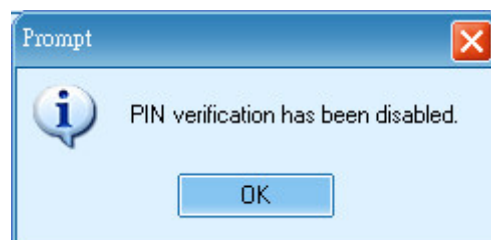
Step2. Once enter the system, go to Tool-> PIN operations-> Disable PIN Verification



Step3. Input the correct PIN numbers, Default Setting: 0000 ◦



Step4. After input PIN numbers, it will have a pop-up message to complete disable PIN numbers ◦

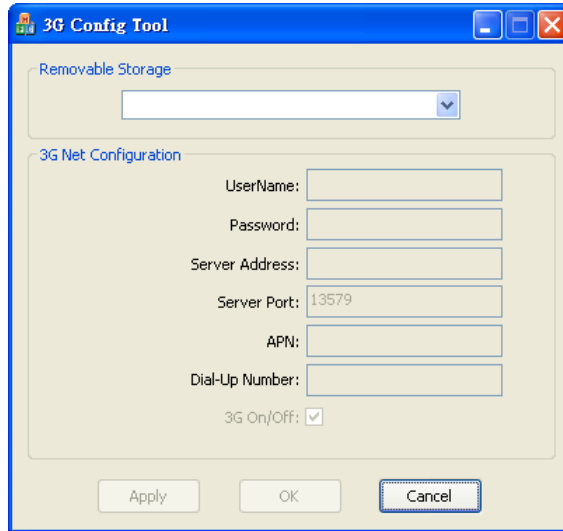


Step5. After complete these steps, reinsert SIM card to the socket on the device to activate.

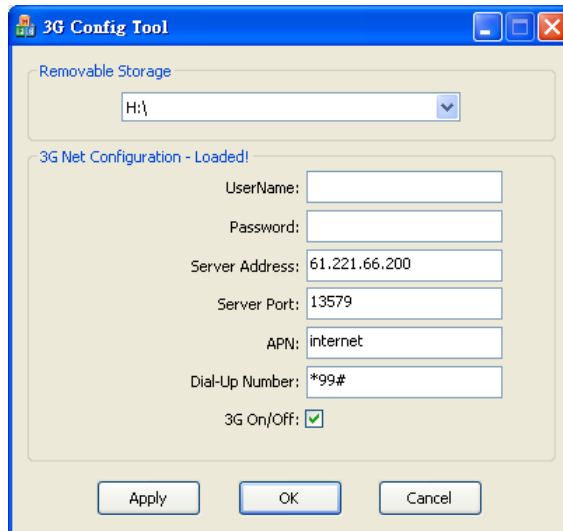
(2) 3G-Network Setting

Setup the relative parameter of 3G-Network.

Step1. Please double click  and open the setting page as below:



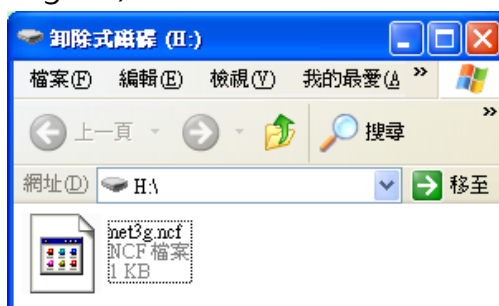
Step2. Insert SD Card to PC and select SD Card to enter relative parameter.



Config tool	
Removable Storage	Source of Device
UserName	Default Setting
Password	Default Setting

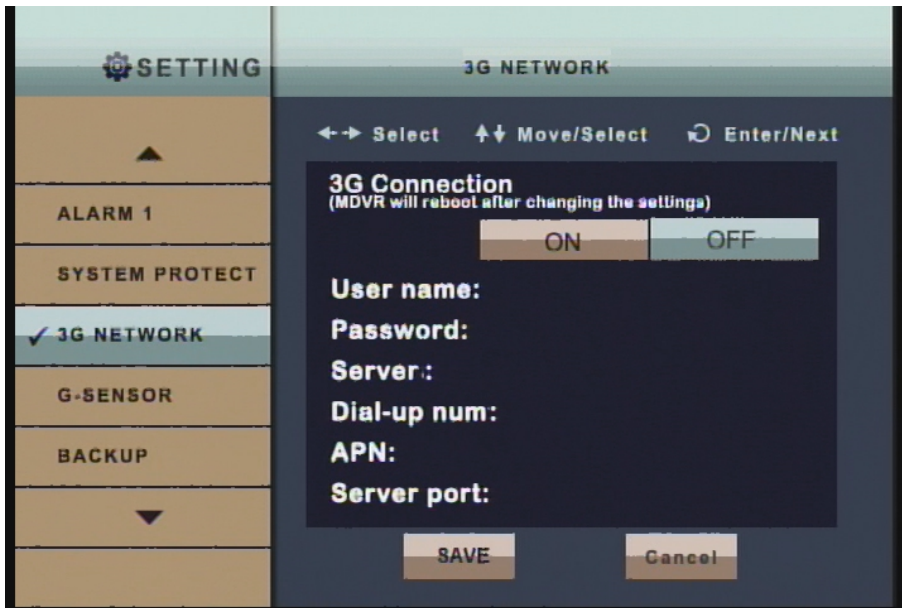
Server Address	Server IP Address
Server Port	Default Sever Port is 13579, Not recommend changing the original setting).
APN	3G APN, generally preset to be Taiwan Telecommunication providers, if in other area, Please check local Telecommunication providers offered APN setting name.)
Dial-Up Number	Dial-Up Number: 3G Dial-Up Number, generally preset to be *99#, if in other area, Please check local Telecommunication providers offered 3G Dial-Up SETTING Numbers.
3G On/Off	3G On/Off: To choice whether star the 3G tele-connecting function or not. "Pick" (V) mean "Star" commonly, if not willing to use tele-connecting function, please directly neglect it.

Step3. After finishing all the input information, click "OK" to save the information into SD card. Click SD card to check if the file already exists. (File name is net3g.ncf)



Step 4. Insert SD card into SD Slot 1 then restart the DVR; after restart, if the parameter is successfully configured, the system will automatically restart in 10 seconds.

Step 5. After the system restart, please go into 3G Network in the main menu to check if the parameter is successfully configured.



(Once the configuration is completed, it will show the information on the screen)

K. 3G Client Remote Monitoring

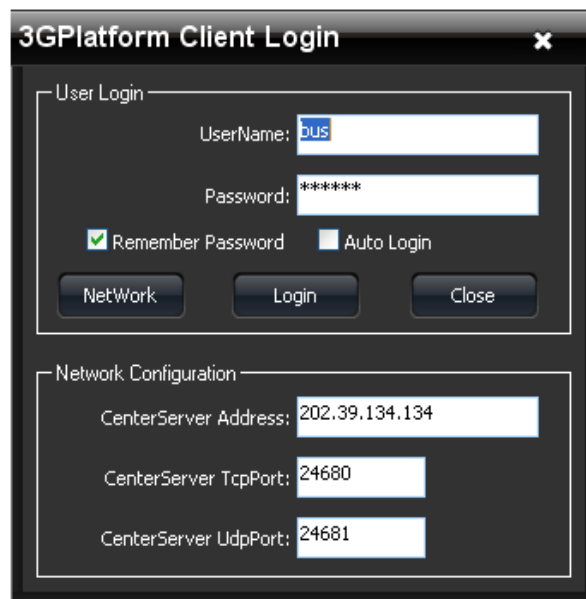
(1) Login

Execute 3GClientApp.exe and login



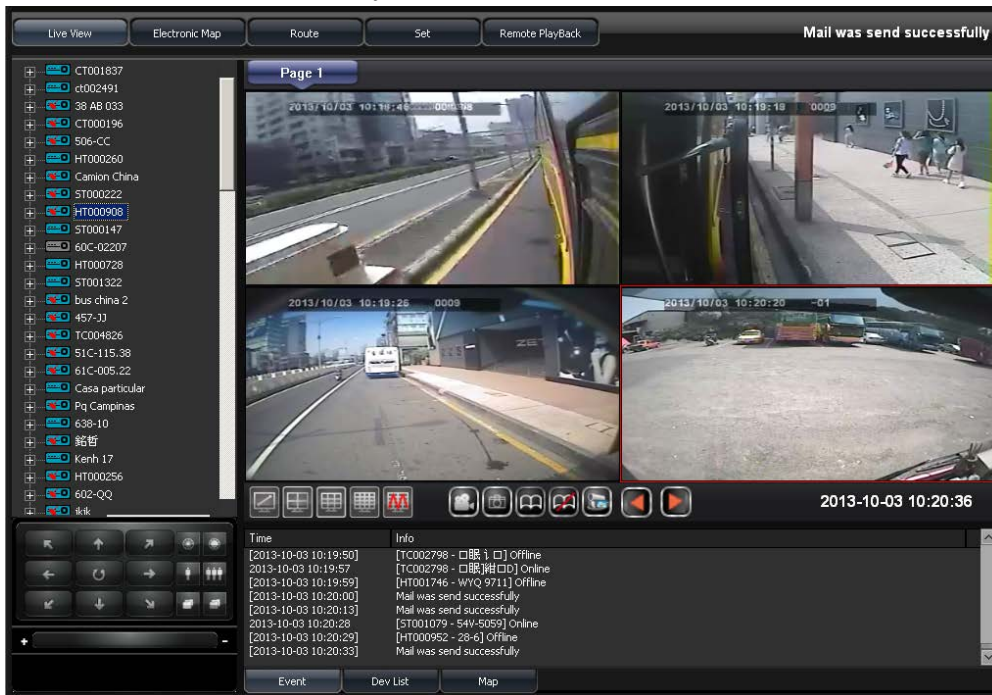
Enter the username and password and then press “Login” button to login screen.

Note: To perform this software will require DirectX 9.0 or more.



User Name	User Account Name
Password	User Account Password
CenterServer Address	3G Server IP Address (Default: 202.39.134.134)
CenterServer TcpPort	Server TCP Port (Default: 24680)
CenterServer UdpPort	Server UDP Port (Default: 24681)

(2) Live View Display



Equipments list display all the connecting equipments. Be able to play real-time image form all channels. Lift click mouse to open equipment channel than click on channel to view the real-time image.

■ Device List








■ Live View

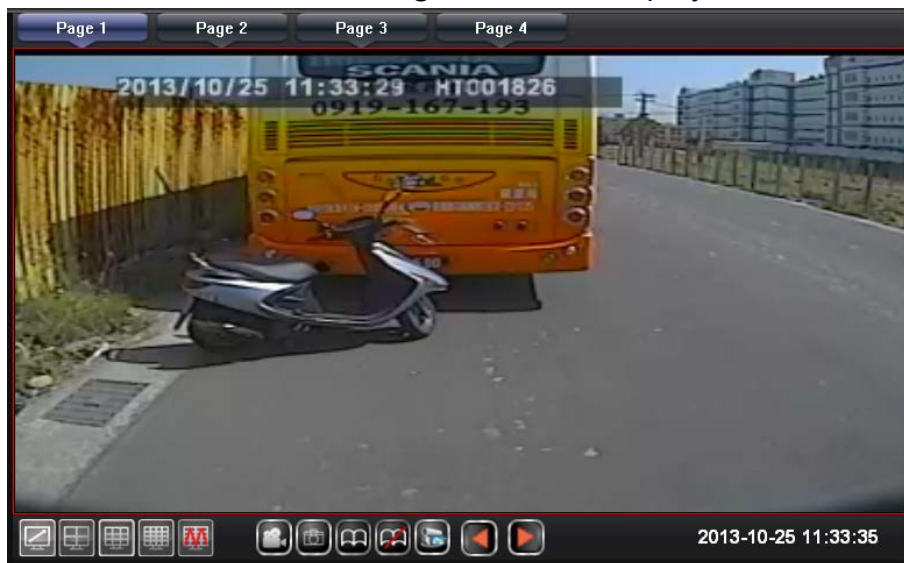


■ Split screen display mode button



	Single Display		Quad Display
	9 divisions Display		16 divisions Display
	Muti-divisions display,25/36/49/64		

Live View-Single Channel Display

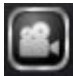









Live View- Quad Channels Display




■ Live View Function buttons





	Recording	Single snapshot as AVI file
	Snapshot	Snapshot
	Auto-flip	Auto flip to next page
	Stop auto-flip	Stop auto-flip to next page
	Monitoring Status	Save the current live viewing channels to be able to retrieve it next time
	Go to previous page	Manually go to previous page
	Go to next page	Manually go to next page

1.  Recording: To record the selected channel, the red recording signal will show up at the bottom of the screen.



2.  Snapshot: To take the snapshot of the selected channel, it will automatically go to the saving directory.




3.  Start Auto-flip: Once auto-flip is triggered, it will go to next page in a period of time.
4.  Stop Auto-flip: Auto-flip function will stop..

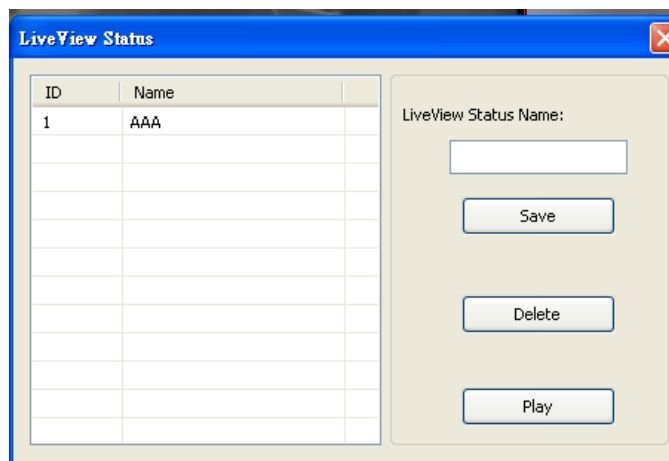
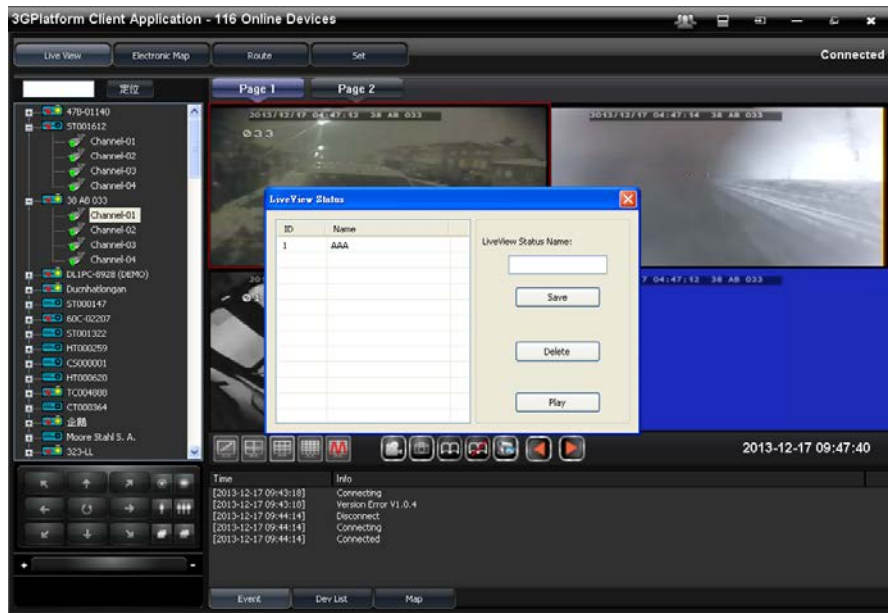
Auto-flip time setting, please go to Setting->Page 1->Auto flip period

Page-Once the time is up, it will automatically go to next page



5.  Monitoring Status: To save the current live channels, input the status name then save it; next time when you log into 3G client software, you could

click the saved status name to watch.



6.   Manually select page: Manually select the previous or next page



■ Live View Interface

To select different display mode: Event/Dev List/Map to show different status.

1. Event

Time	Info
[2013-12-17 09:43:18]	Connecting
[2013-12-17 09:43:18]	Version Error V1.0.4
[2013-12-17 09:44:14]	Disconnect
[2013-12-17 09:44:14]	Connecting
[2013-12-17 09:44:14]	Connected

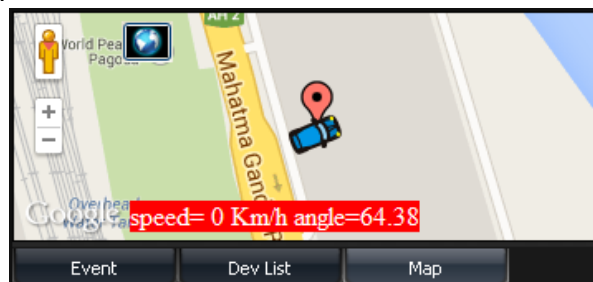
Event Dev List Map

2. Dev List

Time	Info
[2013-12-17 09:43:18]	Connecting
[2013-12-17 09:43:18]	Version Error V1.0.4
[2013-12-17 09:44:14]	Disconnect
[2013-12-17 09:44:14]	Connecting
[2013-12-17 09:44:14]	Connected

Event Dev List Map

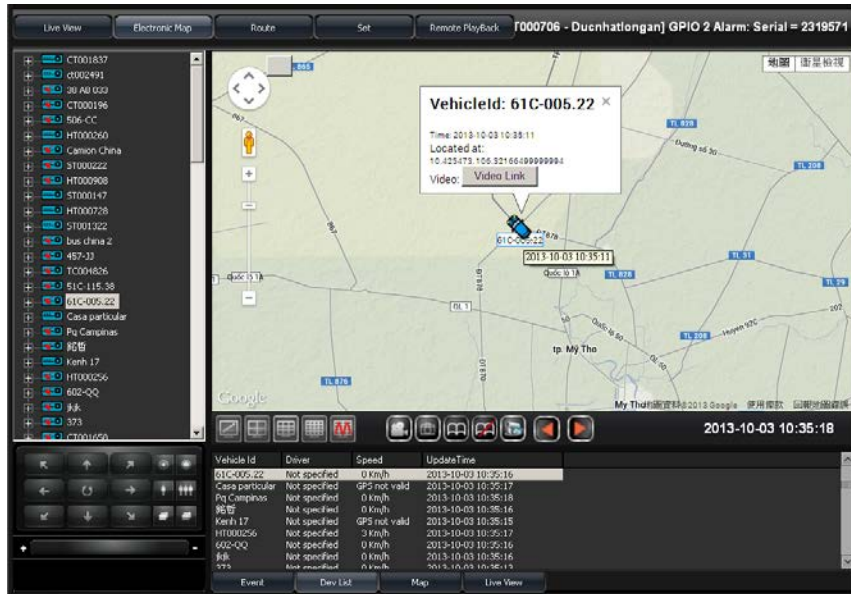
3. Map



(3) Electronic Map

※G-Mouse must equipped with Device to have GPS function to provide positioning information

Once positioning is done, you could use the mouse to click the device for current position.



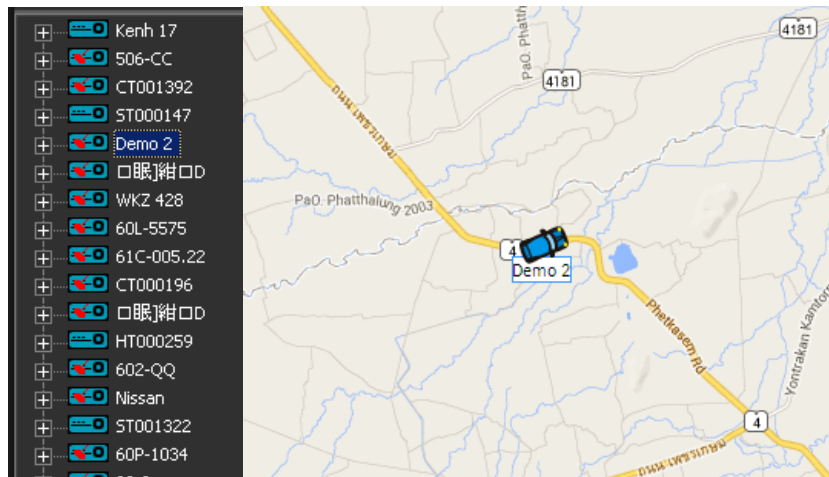
■ Device Positioning

HT000259 Without GPS function.

CT000185 With GPS function Device Located.

■ Electronic Map

Select the positioned device on the list, then it will show its position on the map.



■ Live View Interface

To select different display mode: Event/Dev List/Map to show different status.

1. Event

Time	Info
2013-10-03 10:15:05	[CARG0109 - 皖13658] GPIO 0 Alarm: Serial = 2318839
2013-10-03 10:15:05	[CARG0109 - 皖13658] GPIO 0 Alarm: Serial = 2318840
2013-10-03 10:15:06	[CARG0109 - 皖13658] GPIO 0 Alarm: Serial = 2318841
2013-10-03 10:15:07	[ST000706 - Duchhatlongan] GPIO 2 Alarm: Serial = 2318842
2013-10-03 10:15:12	[TC002814 - 藝曠箕] Online
2013-10-03 10:15:15	[CARG0102 - 藝曠箕] Online
[2013-10-03 10:15:16]	[TC002766 - 口眼] Offline
[2013-10-03 10:15:16]	[HT000396 - 28-3] Offline

Event Dev List Map

2. Dev List

Vehicle Id	Driver	Speed	UpdateTime
61C-005.22	Not specified	0 Km/h	2013-10-03 10:35:16
Casa particular	Not specified	GPS not valid	2013-10-03 10:35:17
Pq Campinas	Not specified	0 Km/h	2013-10-03 10:35:18
銘哲	Not specified	0 Km/h	2013-10-03 10:35:16
Kenh 17	Not specified	GPS not valid	2013-10-03 10:35:15
HT000256	Not specified	3 Km/h	2013-10-03 10:35:17
602-QQ	Not specified	0 Km/h	2013-10-03 10:35:16
jkjk	Not specified	0 Km/h	2013-10-03 10:35:16
373	Not specified	0 Km/h	2013-10-03 10:35:13

Event Dev List Map Live View

3. Map



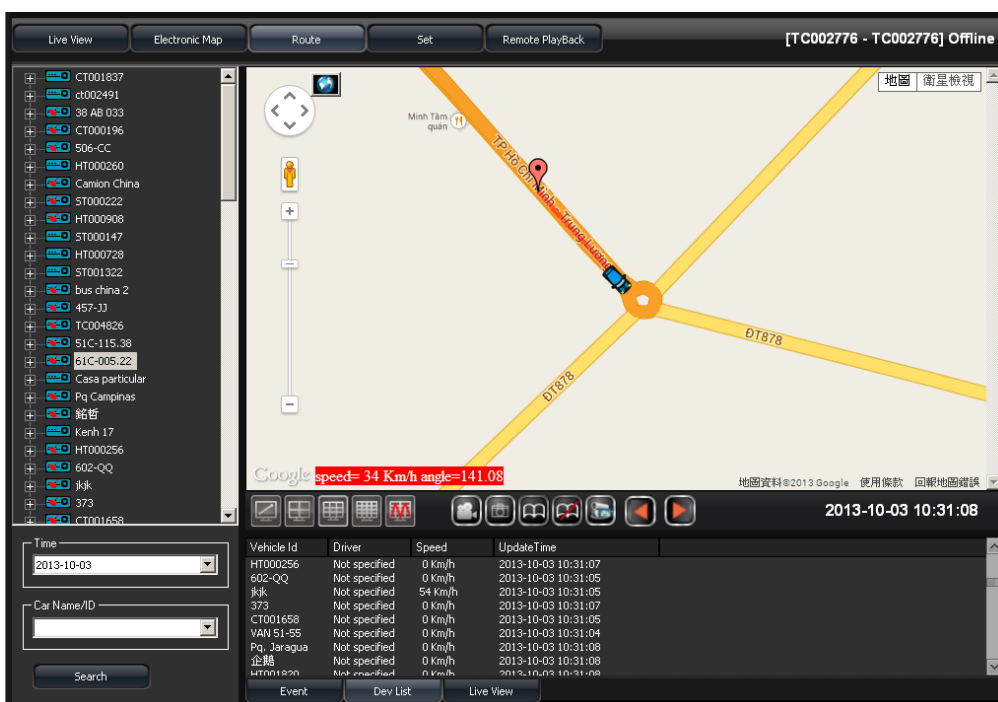
4. Live View



(4) Route

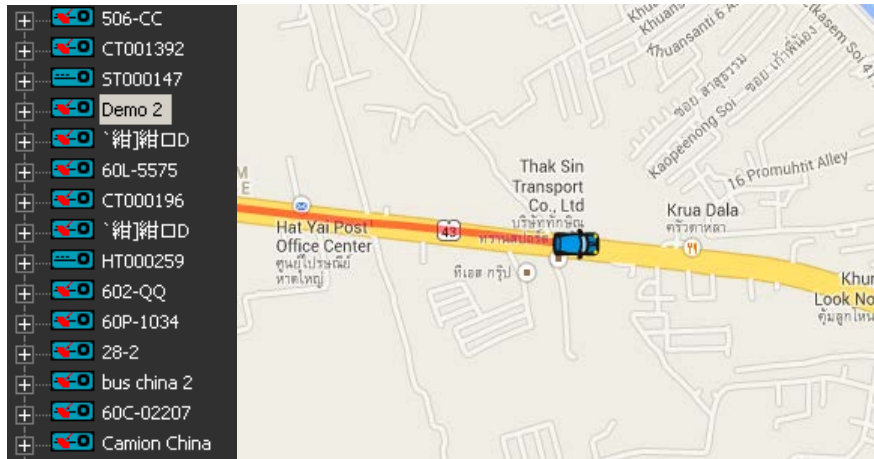
※G-Mouse must equipped with Device to have GPS function to provide positioning information

To display the positioned device at the track, you can notice the traveling route of the vehicle.



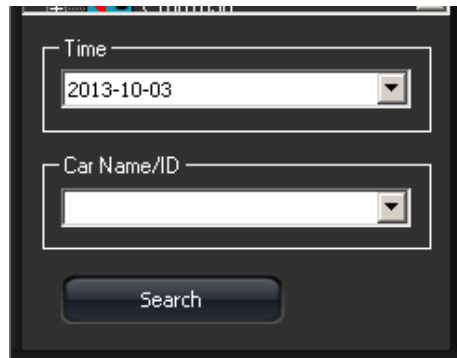
■ Device Positioning Information

Select the positioned device on the list, then it will show its current position and traveling route on the map.



■ Tracking Route Search

Choose Date and Car Name/ID to search the data



■ Remote Live View Message Interface

Mode: Event/Dev List/Map/Live View

1. Event

Time	Info
[2013-12-17 09:43:18]	Connecting
[2013-12-17 09:43:18]	Version Error V1.0.4
[2013-12-17 09:44:14]	Disconnect
[2013-12-17 09:44:14]	Connecting
[2013-12-17 09:44:14]	Connected

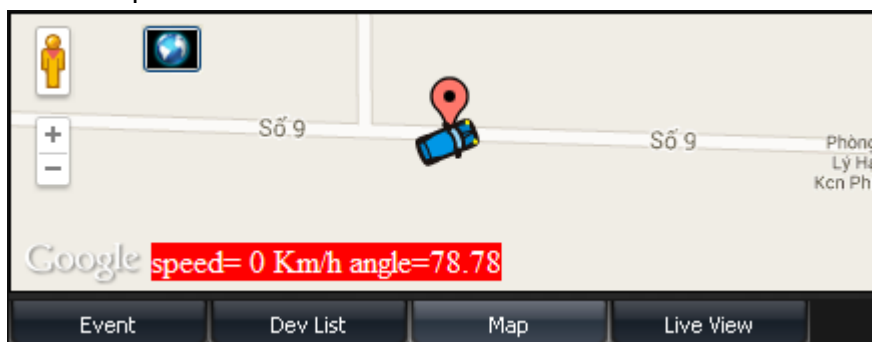
Event Dev List Map Live View

2. Dev List

Vehicle Id	Driver	Speed	UpdateTime
47B-01140	Not specified	0 Km/h	2013-12-17 09:58:49
ST001612	Not specified	0 Km/h	2013-12-17 09:58:50
38 AB 033	Not specified	0 Km/h	2013-12-17 09:58:51
DL1PC-8928 ...	Not specified	0 Km/h	2013-12-17 09:58:50
Ducnhalongan	Not specified	0 Km/h	2013-12-17 09:58:51
ST000147	test	GPS not valid	2013-12-17 09:58:48
60C-02207	Not specified	53 Km/h	2013-12-17 09:58:47
ST001322	Not specified	GPS not valid	2013-12-17 09:58:46
HT000250	Not specified	GPS not valid	2013-12-17 09:58:49

Event Dev List Map Live View

3. Map



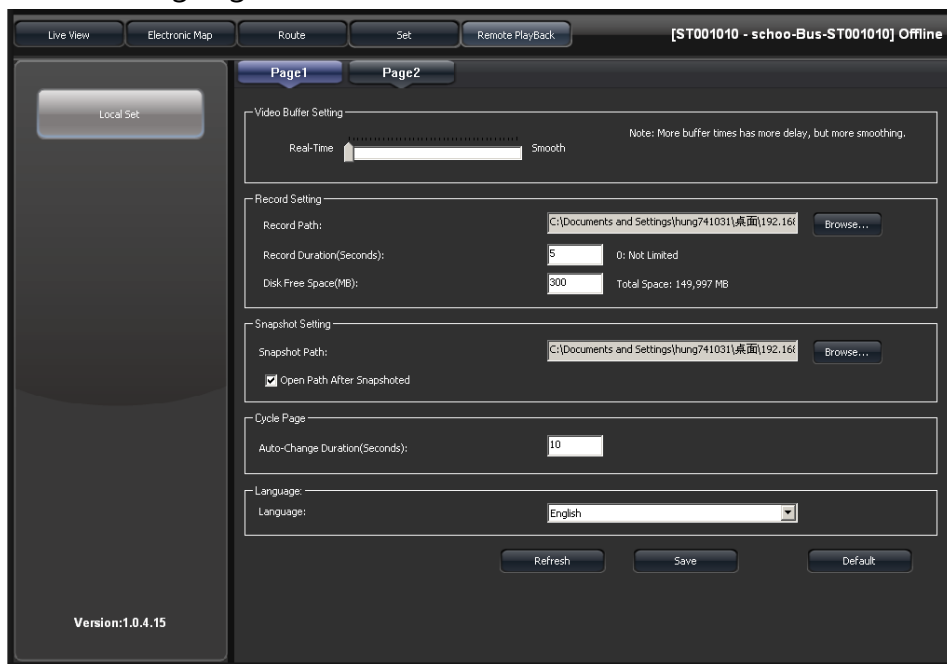
4. Live View



(5) Setting Page

- Page 1

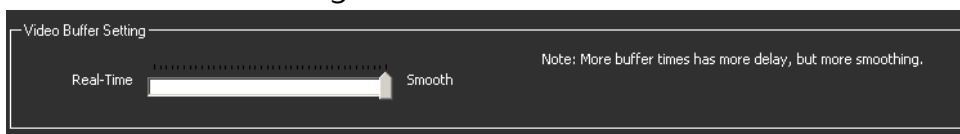
Setting the FPS, recording function, auto turn over page, and language.



1. Video Buffer Setting

Real-Time-> Higher frame rate

Smooth-> Higher video resolution



2. Recording Setting

Record Path, Record Duration (Seconds), and Disk Free Space(MB) are the relative options.

Record Setting

Record Path: C:\Documents and Settings\hung741031\My Document

Record Duration(Seconds): 60 0: Not Limited

Disk Free Space(MB): 300 Total Space: 149,997 MB

3. Snapshot

Set the path after snapshot

Snapshot Setting

Snapshot Path: C:\Documents and Settings\hung741031\My Document

Open Path After Snapshoted

4. Auto-Change Duration (Seconds)

Set the duration in seconds of auto-change page.

Cycle Page

Auto-Change Duration(Seconds): 10

5. Language

Setup 3G Client Language display.

Language:

Language: Chinese (Taiwan)

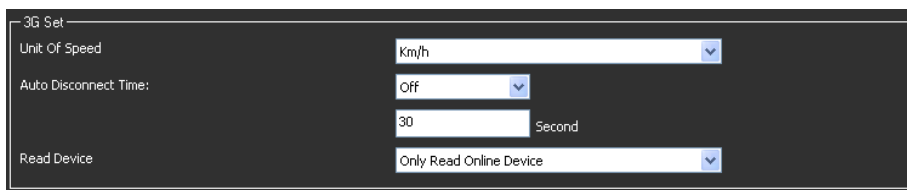
■ Page 2

Setting 3G function, recording, and e-mail.



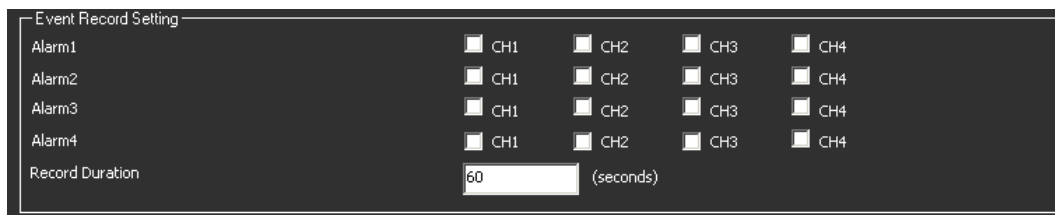
1. 3G Setting

Unit of Speed, Auto Disconnect Time, Read Device functions are available.



- Speed Unit: Speed unit of E-map and tracking route display
- Auto Disconnect Time: During live video playing, once it is set, the video image will be Close at the setup time.
- Read Device: To read all the devices or all available online devices. (If too many devices in this server, we recommend to select "only read online device" to have better PC performance.)
- Event Record Setting

To set the video recording channel and duration, once the alarm is triggered. (Remark: Once this function is set, all of online device video will be recorded; hence, if there are too many devices in this server, we recommend to close this function to have better PC performance.)



1. E-mail setting

When the alarm is triggered, the server will send a e-mail to the specific account, please refer to the following figure.



- SMTP Servr : SMTP Server Address
- SMTP Port : SMTP Port
- Email Account
- Email Password
- Email Address
- Attach Video File when Email
- (Remark: E-mail setting: Once the alarm is triggered, the e-mail will be sent to all of online device; hence, if there are too many devices in this server, we recommend to close this functio to occupy unnecessarily the space of the e-mail account.)

SMTP List Table

Mail	SMTP	SSL Port	StartTLS
Googlemail	smtp.gmail.com	465	587
Yahoo Mail	smtp.mail.yahoo.com	465	x
Outlook	smtp.live.com	x	587

L. Capacity Evaluation of Continuous Recording Storage Device

Assumption of the minimum record time for Mobile DVR: 8Ch/15FPS , Statics Recording and different capacity of SD Cards.

SD Capacity	Estimated Rec Time
8G	1H
16G	2H
32G	4H
64G	8H
128G	16H

★Data for reference, real recording time will be affected by different recording environment.



MADE IN TAIWAN